



---

## Prevalence of left ventricular geometric patterns in hypertensive patients in Angola

Savarino Victória Pereira<sup>1</sup>, Ana Feijão<sup>2</sup>, Humberto Morais<sup>3\*</sup>

<sup>1,2</sup> Cardiology Service. Hospital Américo Boavida. Avenida Hoji Ya Henda. Luanda, Republic of Angola

<sup>3</sup> Department of Cardiology. Hospital Militar Principal/Instituto Superior. Rua D. Manuel I. Luanda, Republic of Angola

DOI: <https://doi.org/10.33545/26634104.2019.v1.i1a.1>

---

### Abstract

The aim of the present study is to evaluate the prevalence of left ventricular geometric patterns in hypertensive patients in Angola.

**Methodology:** cross-sectional descriptive observational study performed in two diagnostic centers in Luanda. We included all hypertensive patients who underwent transthoracic echocardiographic study in the 2nd quarter of 2012 in both centers. The echocardiographic study was performed according to the ASE recommendations. The relative wall thickness and the presence or absence of echocardiographic left ventricular hypertrophy were used to determine the various geometric patterns

**Results:** 84 patients were included, 33 males and 51 females, the mean age was 52.7 ( $\pm$  13.4) years. 49% had concentric hypertrophy, 20% had eccentric hypertrophy, and 17% concentric remodeling and 14% had normal geometry. Regarding left ventricular function 87% of had normal systolic function, 64% had diastolic dysfunction.

**Conclusion:** The results show that concentric and eccentric hypertrophy is the most frequent geometric patterns. Diastolic dysfunction is present in majority of the patients. The need for longitudinal studies assessing the prognostic value of geometric patterns in hypertensive patients in Angola, as well as their relationship with left ventricular function is imperative.

**Keywords:** systemic arterial hypertension, left ventricular geometry, transthoracic echocardiography

---

### Introduction

In Angola, systemic arterial hypertension (SAH) is the most frequent chronic non-communicable disease, with an estimated prevalence of 23% <sup>[1]</sup>. Left ventricular hypertrophy (LVH) is a known complication of SHA that has long been recognized as an independent risk factor for adverse outcomes in hypertensive patients <sup>[2, 3]</sup>. The various forms of left ventricular (LV) adaptation to uncontrolled hypertension were described in four different geometric patterns using combinations of left ventricular mass index (LVMI) and relative wall thickness (RWT) <sup>[4]</sup>. They are: normal geometry (NG) with LVMI and normal RWT; concentric remodeling (CR) - normal LVMI and increased RWT; eccentric hypertrophy EH - LVMI increase and normal RWT; concentric hypertrophy (CH), with increased LVMI and RWT. Studies have shown that the incidence of cardiovascular events is higher in patients with CH, intermediate in those with CR and EH geometric patterns, and lower in patients with NG <sup>[5, 6]</sup>. The objective of the present study is to evaluate the prevalence of left ventricular geometric patterns in hypertensive patients in Angola, as well as to describe sociodemographic, clinical and echocardiographic aspects of the study population.

### 2. Materials and methods

Cross-sectional descriptive observational study carried out in two diagnostic centers in Luanda. All hypertensive patients who underwent two-dimensional transthoracic echocardiographic and Doppler study in the 2nd quarter of 2012, in both centers were included. Patients with other non-HBP-related heart diseases and patients younger than 18 years were excluded. Sociodemographic, clinical and echocardiographic variables were collected.

#### 2.1 Sociodemographic Characterization.

The data on age, sex, weight, height and cardiovascular risk factors (CVRF) were recorded on the day when the patients underwent echocardiography. The age and CVRF (family history of hypertension, diabetes mellitus, smoking, sedentary lifestyle and dyslipidemia) were variables based on the interview conducted on the patient. The height and weight were measured by an experienced health professional. The body surface (BS) was calculated by the formula  $BS = \text{height (m)}/\text{weight (kg)}$  and body mass index (BMI) was calculated by the formula  $BMI =$

weight (kg) / height<sup>2</sup> (cm). According to the BMI, patients were classified as underweight: BMI below 18.5, normal weight: BMI between 18.5 and 24.9, overweight: BMI between 25 and 29.9, obesity grade I: BMI between 30 and 34, obesity grade II: BMI between 35 and 39.9, obesity grade III: BMI ≥ 40.

### 2.2 Characterization of Arterial Hemodynamic

Systolic blood pressure (SBP) and diastolic blood pressure (DBP) were measured by a specialized healthcare professional minutes before the echocardiographic examination. Blood pressure was measured with the patient sitting in a calm, homeothermic environment, without sound or light pollution and without ingestion or inhalation of exciting products (such as caffeine, alcohol, tobacco) in the 15 to 30 minutes preceding the measurement. For this purpose, SBP and DBP were measured using an aneroid sphygmomanometer, according the Korotkoff method (k1 to k5 sounds, respectively).

The variable "control of hypertension" was based on the analysis of the BPs assessed, being considered controlled whenever SBP <140 and DBP <90 mmHg. If SBP ≥ 140 and DBP ≥ 90 mmHg, hypertension was considered uncontrolled. In patients with renal impairment and / or diabetes, hypertension was considered controlled only with SBP <130 and DBP <80 mm Hg.

The time of diagnosis of hypertension was divided into "diagnosis for less than 1 year", "diagnosis between 1 and 5 years" and "diagnosis for more than 5 years". In this way, we can evaluate whether there is a recent (less than 1 year), intermediate (1 and 5 years) or long (more than 5 years) diagnosis with all the physiological changes that such a difference entails.

### 2.3 Two-Dimensional Transthoracic Echocardiography

Two-dimensional transthoracic echocardiography (TTE) and the Doppler study were performed according to the Guidelines of the American Society of Echocardiography [7, 8]. The thickness of the interventricular septum (IVST), the thickness of the posterior wall (PWT), and the diastolic diameter of the left ventricular (LVDD) were measured in the telediastole; the left ventricle systolic diameter (LVSD) on the telesystole. All of these measurements were made in M-mode, guided by two-dimensional echocardiography (Fig. 1A). LV mass (LVM) was calculated by the formula:  $MVE = 0.8 \times \{1.04 [(DTDVE + PWT + SIVT)^3 - (DTDVE)^3] + 0.6\}$  (). The LVM index (LVMI) was calculated by the formula  $LVMI = LVM/BS$  (9). The LVMI was considered normal when ≤134 g / m<sup>2</sup> and ≤110 g / m<sup>2</sup> for men and women respectively. Relative wall thickness (RWT) was calculated according to the following formula:  $RWT = 2 \times PWT / LVDD$ . RWT was considered normal when ≤ 0.42 [10].

The geometric patterns of the left ventricle were defined as follows: NG with normal RWT and LVMI; cardiac remodeling CR - RWT is increased but LVMI is normal; EH - RWT is normal but LVMI is increased; CH - RWT and LVMI are increased.

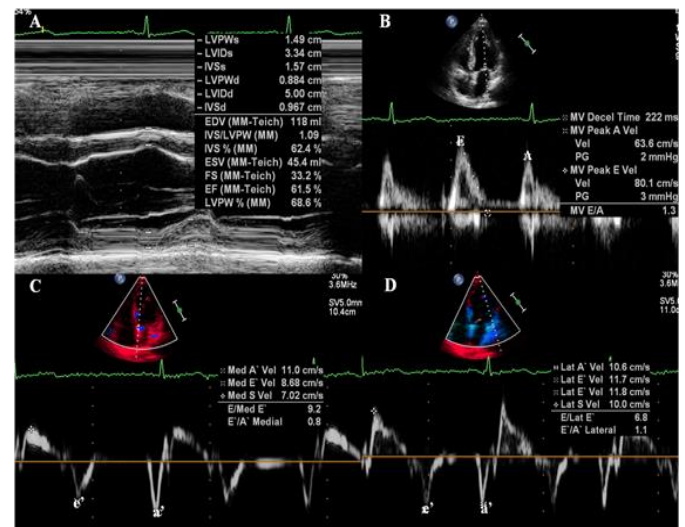
Left atrial volume was calculated by the Simpson method in apical of 2 and 4 chambers, making a volumetric mapping of the left atrium, and it was indexed to BS. The left ventricular shortening fraction (SF) was calculated by the following formula:  $SF = (LVDD - LVSD) / LVDD \times 100$ . The left ventricular

ejection fraction (LVEF) was calculated by the Simpson method. The left ventricular systolic function was classified into 4 types: preserved if LVEF ≥55%, slightly compromised if LVEF was between 45-54%, moderately compromised if LVEF is between 30-44% and severely compromised if LVEF <30% [7].

Left ventricular filling was assessed by recording mitral flow by standard pulse Doppler technique, and the following parameters were considered: early diastolic peak flow velocity (E), late diastolic peak flow velocity (A) and the ratio of the early to late flow velocity peaks (E/A ratio) (fig 1B). Pulsed-wave tissue Doppler imaging was used to measure early diastolic peak wave velocity (e'), and late diastolic peak velocity wave (a') with the cursor placed over the septal and lateral mitral annulus (fig 1C and D). In addition, using the mean early diastolic peak wave velocity e' of both sites of the mitral annulus the early diastolic peak flow velocity to early diastolic peak wave velocity (E/e') ratio were calculated.

Diastolic function was classified into 5 types: normal diastolic function, mild diastolic dysfunction (DD), moderate DD (pseudo-normal or DD grade II), severe DD restrictive or DD grade III) and "mild DD / Age" (for all patients with parameters compatible with altered relaxation, it being not possible to distinguish between mild diastolic dysfunction or age-specific changes), according to the recommendations for assessment of left ventricular diastolic function (2009) [8].

Statistical analysis: data are presented as mean and standard deviation, and the frequency as percentage. Calculations were performed in a calculation table in Excel for Windows.



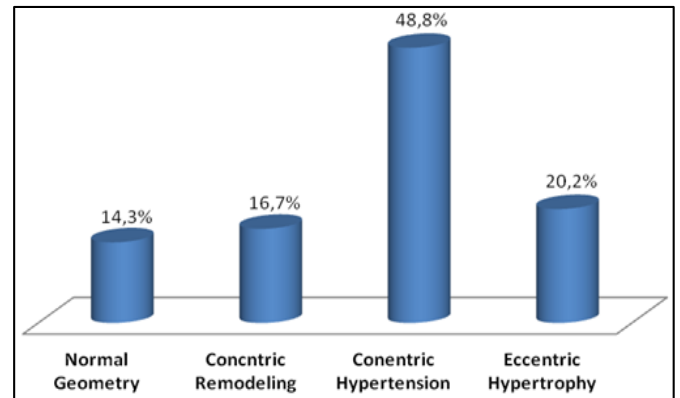
**Fig 1A:** M-mode echocardiography revealing the results of measurements of the interventricular septum thickness, posterior wall thickness, left ventricular diastolic diameters in telediastole and left ventricular systolic diameter in telesystole; 1B - pulsed Doppler with the cursor placed just above the mitral valve showing the results of the early diastolic peak flow velocity (E) and late diastolic peak flow velocity (A), 1C and D Doppler tissue with the cursor placed on the septal and lateral mitral annulus respectively revealing the result of measurements of the early diastolic peak wave velocity (e'), and late diastolic peak velocity wave (a')

**3. Results**

The sociodemographic and clinical characteristics are shown in table I. As we can see, 84 patients were included in the study, being 33 (39%) males and 51 (61%) females, the mean age was  $52.7 \pm 13,4$  years. The mean SBP and DBP are 142.8 mmHg and 85 mmHg, respectively. It should be noted that 41% of patients have been diagnosed for less than one year and in only 24% of patients hypertension was considered controlled. Analysis of the other CVRF/comorbidities showed that they are present in 51% of patients with special emphasis on the family history of hypertension that accounted for 39%. With regard to BMI, we emphasized that only 37% of the patients were normal weight, 42% were overweight and 18% were obese.

The echocardiographic parameters presented in Table II show that 87% of patients had normal left ventricular systolic function. In contrast, left ventricular diastolic dysfunction was present in 64% of patients: mild in 37%, mild vs associated with age in 9%, moderate in 12% and severe in 6%. The geometric patterns of the left ventricle, illustrated in figure 2, show that the predominant

geometric pattern in the present study was CH in 49% of patients, followed by EH and CR in 20% and 17% respectively.



**Fig 2:** Prevalence of geometric patterns in the population studied (n-84)

**Table 1:** Sociodemographic and clinical characteristics of the studied population (n - 84)

| Variables                 | N             | Interval   |
|---------------------------|---------------|------------|
| Variables                 | 84            |            |
| Mean age                  | 52,7(13,4)    | 18-95      |
| F                         | 51 (60,7%)    |            |
| M                         | 33(39,3%)     |            |
| BS (m <sup>2</sup> )      | 1,79±0,21     | 1,2-2,3    |
| BMI (Kg/ m <sup>2</sup> ) | 26,0±4,5      | 17,0- 37,2 |
| Underweight               | 3 (3,5%)      |            |
| Normal weight             | 31 (36,9%)    |            |
| overweight                | 35 (41,6%)    |            |
| Obesity                   | 15(17,8%)     |            |
| Duration of the SAH       |               |            |
| < 1 year                  | 41 (40,8%)    |            |
| 1 t 5 years               | 16 (19,0%)    |            |
| > 5 years                 | 27 (32,1%)    |            |
| SBP mmHg                  | 142,82±21,9   | 90-210     |
| DBP mmHg                  | 85,1±13,35    | 60-140     |
| Controlled BP             | 29,0 (24,52%) |            |
| CVRF/Comorbidities        | 43 (51,2%)    |            |
| Family history            | 33 (39,3%)    |            |
| smoking                   | 2 (2,38%)     |            |
| Diabetes mellitus         | 4 (4,76%)     |            |
| Dyslipidemia              | 5(5,95%)      |            |
| CKD                       | 6(7,14)       |            |

Table 1 Sociodemographic and clinical characteristics of the studied population (n - 84) F – female, M- male, BS – body surface, BMI – body mass index, BP - blood pressure, CKD – chronic kidney disease, CVRF – cardiovascular risk factors, DBP – diastolic blood pressure, SBP – systolic blood pressure, SAH – systemic arterial hypertension,

**Table 2:** Echocardiographic and Doppler Study Parameters.

| Variable                            | Mean (SD)   | Interval  |
|-------------------------------------|-------------|-----------|
| IVST (mm)                           | 12,6±2,8    | 7-21      |
| PWT (mm)                            | 11,4±2,3    | 7-16      |
| LVTDD (mm)                          | 49,0±6,4    | 37-73     |
| LVM (g)                             | 279,0±106,7 | 101-606   |
| LVMI (g/m <sup>2</sup> )            | 159,1±66,1  | 56-366    |
| RWT                                 | 0,47±0,2    | 0,28-0,86 |
| SF (%)                              | 37,6±10,8   | 7-68      |
| LVEF (%)                            | 65,4±14,3   | 16-86     |
| LAI ml/ m <sup>2</sup>              | 38,4±12,6   | 12,1-87,4 |
| E/A                                 | 1,3±0,78    | 0,4-4,3   |
| E/e'                                | 6,4±2,97    | 2,7-18,3  |
| Left ventricular systolic function  |             |           |
| Preserved                           | 73(86,9%)   |           |
| Slightly compromised                | 5(5,9%)     |           |
| moderately compromised              | 3(3,6%)     |           |
| severely compromised                | 3(3,6%)     |           |
| Left ventricular diastolic function |             |           |
| Normal                              | 30 (35,7%)  |           |
| Mild DD                             | 31 (36,9%)  |           |
| "Mild DD/Age"                       | 8 (9,5%)    |           |
| Moderate DD                         | 10 (11,9%)  |           |
| Severe DD                           | 5 (5,9%)    |           |

Table II - Echocardiographic and Doppler Study Parameters. DD diastolic dysfunction IVST – interventricular septal thickness, LVDD - left ventricular diastolic diameter, LVEF – left ventricular ejection fraction, LVM - left ventricular mass LVMI - left ventricular mass index LAI – left atrial index SF PWT – posterior wall thickness, RWT - relative wall thickness

#### 4. Discussion

The objective of the present study was to evaluate the prevalence of the various geometric patterns in Angolan hypertensive patients, as well as to describe sociodemographic, clinical and echocardiographic aspects of the study population. Our main results showed that CH pattern was found in the majority of the patients; Second, 64% of the study population had some degree of diastolic dysfunction and third, only 1/4 of the patients had controlled hypertension.

The combined use of LVMI and RWT allows the distinction of four geometric patterns [4]. Our study showed that CH was the most common pattern, occurring in 49% of patients, which is in agreement with most studies conducted in sub-Saharan Africa (Table III) [11-18].

Aje *et al.* observed that 28% of patients with newly diagnosed hypertension exhibited the geometric pattern of CH, while 18% demonstrated EH [11]. In turn, Adamu *et al.* observed that 38% of patients with newly diagnosed hypertension exhibited the CH pattern followed by EH in 25% of patients [12]. Akintunde *et al.* in treated hypertensive patients in two consecutive series found that the CH was the main geometric pattern found in 38.3% and 41.5% respectively [13, 16]. In contrast, Silangei *et al.*, in Tanzania, observed that the NG was the most frequent geometric pattern (30%) followed by CH (28%), hypertensive patients under treatment and untreated patients were included in this study [17]. Adebayo *et al.* report CR as the main pattern found followed by CH in a series of 1020 hypertensive patients [18]. With the exception of the Hajayi *et al.* study [14], which found a NG pattern in 52% of patients, the percentage of the NG pattern in the

remaining series ranged from 15 to 30%. In the present study, we found this pattern in only 14% of patients.

It can be assumed that the changes observed in our study resulted from uncontrolled hypertension since only 25% of our patients had controlled hypertension. Studies comparing geometric patterns between treated and controlled patients and uncontrolled patients are required to answer this question. However, it is known that patients with CH have a higher correlation with persistently elevated blood pressure levels during ambulatory blood pressure monitoring. On the other hand, LV remodeling seems to be influenced by other factors such as: ethnicity, gender, presence of diabetes mellitus, previous myocardial infarction obesity, chronic renal failure and metabolic syndrome [19]. All these factors can justify the variability in the geometric patterns found among the several studies analyzed here. The methodology used in the various studies, using several formulas to calculate LVM and RWT, as well as several cut-off values for the definition of geometric patterns, is another important aspect to take into account [20].

In Sub-Saharan Africa several studies have evaluated the relationship between geometric patterns and left ventricular function [12, 13, 15-17]. Regarding diastolic function, the data found in our study were very similar to the results reported by Adamu *et al.*, [12] where diastolic dysfunction was found in 62% of hypertensive patients: 52.7% had alterations in ventricular relaxation (mild DD), 8% had a pseudo-normal pattern (moderate DD) and 1.3% had a restrictive pattern (severe DD). Only about 38% of patients had normal diastolic function. In addition, these authors found significant differences in diastolic function between the various geographic patterns and in the univariate analysis, the E wave and the E/A ratio correlated significantly but inversely with the posterior wall thickness LVMI and the relative wall thickness. S wave of pulmonary vein flow and S D ratio were negatively correlated with LVMI. Multivariate of multiple regression analysis maintained the correlation between E wave, pulmonary venous S wave, E/A ratio and LVMI and RWT. Adebayo *et al.* [18] also found that the Doppler study parameters showed some degree of diastolic dysfunction in hypertensive patients with abnormal LV geometric patterns. These parameters included the E/A ratio, E wave deceleration time, and isovolumetric relaxation time. Patients with concentric hypertrophy showed significant differences in all three parameters compared to those with normal geometry. Regarding left ventricular systolic function, several authors showed that patients with eccentric hypertrophy had statistically lower parameters of systolic function (ejection fraction and shortening) compared to other geometric patterns [13, 15, 17, 18]. Preliminary data from a sub-analysis of our study indicate that there are significant differences in left ventricular systolic and diastolic function between the various geometric patterns (data not shown).

#### Clinical Importance

Variable degrees of morbidity and mortality are associated with ventricular geometry patterns with worse prognosis for patients with concentric hypertrophy (24%), eccentric hypertrophy (10%) and concentric remodeling (6%) [21]. Koren *et al.* [5] followed 280 patients with systemic arterial hypertension for 10.2 years and found, in a univariate analysis, that ventricular hypertrophy is a predisposing factor of cardiovascular events. In multivariate

analysis adjusted for sex, age, total cholesterol and systolic and diastolic blood pressure, ventricular hypertrophy was a predictor of cardiovascular events, cardiac death and global mortality. Regarding the geometric pattern, patients with concentric hypertrophy also had a higher incidence of cardiovascular events in this group. Muiesan *et al.* [22] also showed that cardiovascular events were more frequent in patients with HC, implying it as a dangerous adaptive pattern for hypertension.

Several investigations show that ventricular hypertrophy may regress with therapeutic measures [22, 23]. Although this regression results in an improvement in the filling pattern and left ventricular performance, data indicating that regression of hypertrophy is a determinant factor for the improvement of hypertensive mortality and morbidity are controversial [19].

In summary, in the present study, the vast majority of patients presented an altered geometric pattern, with concentric hypertrophy being the most common pattern followed by eccentric hypertrophy. These data highlight the severity of hypertensive patients in Angola and reinforce the need for a more aggressive approach in early detection, appropriate institution of treatment and follow-up of our patients with hypertension.

**Table 3:** % of LV geometric patterns in hypertensive patients in Africa

| Auhtors (Year)                        | NG N(%)   | CR N(%)   | CH N(%)   | EH N(%)   |
|---------------------------------------|-----------|-----------|-----------|-----------|
| Aje <i>et al.</i> (2006)              | 28(28,0)  | 26(26,0)  | 28(28,0)  | 18(18,0)  |
| Adamu <i>et al.</i> (2009)            | 15(15,3)  | 33(22,0)  | 57(38,0)  | 37(24,7)  |
| Akitunde <i>et al.</i> (2010)         | 30(16)    | 53(28,2)  | 72(38,3)  | 33(17,5)  |
| Karaye <i>et al.</i> (2011)           | 24(16,9)  | 26(18,3)  | 38(26,8)  | 54(38,0)  |
| Akitunde <i>et al.</i> (2011)         | 29(17,7)  | 43(16,2)  | 68(41,5)  | 24(14,6)  |
| Ajayi <i>et al.</i> (2011)            | 68(52,3)  | 38(29,2)  | 12(9,2)   | 12(9,2)   |
| Silangei <i>et al.</i> (2012)         | 68(30,0)  | 45(19,8)  | 64(28,2)  | 50(22,0)  |
| Adebayo <i>et al.</i> (2013)          | 186(18,2) | 488(47,8) | 237(23,2) | 109(10,7) |
| Savarino <i>et al.</i> (actual Série) | 12(14,3)  | 14(16,7)  | 41(48,8)  | 17(20,2)  |

Table III - % of LV geometric patterns in hypertensive patients in Africa  
 LV – left ventricular, NG - normal geometry CR - concentric remodeling  
 CH - concentric hypertrophy EH - eccentric hypertrophy.

## 5. Conclusion

The results show that, in our hypertensive population, concentric and eccentric hypertrophies are the most frequent geometric patterns. Diastolic dysfunction is present in most patients. The need for longitudinal studies assessing the prognostic value of geometric patterns in hypertensive patients in Angola, as well as their relationship with left ventricular left ventricular function is imperative.

Contribution of the authors: Pereira SV- Elaborated the conception and design of the study, participated in the analysis of the data, as well as the writing of the manuscript. Feijão A - Participated in the collection and analysis of the data, as well as the writing of the manuscript. Morais H Participated in data analysis, bibliographical research as well as the writing of the manuscript and reviewed the final version of the manuscript and approve it for publication,

Conflict of interests: None to declare.

Acknowledgments: None to declare.

Financial support: None

## 6. References

- Pires J, Sebastião Y, Langa A, Nery S, Hypertension in Northern Angola: prevalence, associated factors, awareness, treatment and control, BMC Public Health 2013;13:90
- Levy D, Garrison RJ, Savage DD, Kannel WP, Castelli WP. Prognostic implications of echocardiography determined left ventricular mass in the Framingham Heart Study. N Engl J Med. 1990; 322(22):1561-6.
- Ghali JK, Liao Y, Simmons B, Castaner A, Cao G, Cooper RS. The prognostic role of left ventricular hypertrophy in patients with or without coronary artery disease. Ann Intern Med. 1992; 117(10):826-31.
- Ganau A, Devereux RB, Roman MJ, *et al.* Patterns of left ventricular hypertrophy and geometric remodeling in essential hypertension. J Am Coll Cardiol. 1992; 19(7):1550-8.
- Koren MJ, Devereux RB, Casale PN, Savage DD, Laragh JH. Relation of left ventricular mass and geometry to morbidity and mortality in men and women with essential hypertension. Ann Intern Med. 1991; 114(2):345-52.
- Verdecchia P, Schillaci G, Borgioni C, *et al.* Adverse prognostic significance of concentric remodeling of the left ventricle in hypertensive patients with normal left ventricular mass. J Am Coll Cardiol. 1995; 25(4):871-8.
- Quiñones MA, Otto CM, Stoddard M, Waggoner A, Zoghbi WA. Recommendations for Quantification of Doppler Echocardiography: A Report From the Doppler Quantification Task Force of the Nomenclature and Standards Committee of the American Society of Echocardiography, J Am Soc Echocardiogr. 2002; 15:167-84.
- Nagueh SF, Appleton CP, Gillebert TC, Marino PN, Oh JK, Smiseth OA, *et al.* Recommendations for the Evaluation of Left Ventricular Diastolic Function by Echocardiography, J Am Soc Echocardiogr. 2009; 22:107-33.
- Devereux RB, Alonso DR, Lutas EM, Gottlieb GJ, Campo E, Sachs I, Reichek N, *et al.* Echocardiographic assessment of left ventricular hypertrophy: Comparison to necropsy findings. Am J Cardiol. 1986; 57(6):450-8.
- Levy D, Savage DD, Garrison RJ, Anderson KM, Kannel WB, Castelli WP. Echocardiographic criteria for left ventricular hypertrophy: The Framingham Heart Study. Am J Cardiol. 1987; 59(9):956-60.
- Aje A, Adebisi AA, Oladapo OO, *et al.* Left ventricular geometric patterns in newly presenting Nigerian hypertensives: an echocardiographic study. BMC Cardiovasc Disord. 2006; 6:4.
- Adamu UG, Kolo PM, Katibi IA, Opadijo GO, Omotosho AB, Araoye MA. Relationship between left ventricular diastolic function and geometric patterns in Nigerians with newly diagnosed systemic hypertension. Cardiovasc J Afr. 2009; 20(3):173-7.
- Akintunde AA, Familoni OB, Akinwusi PO, Opadijo OG. Relationship between left ventricular geometric pattern and systolic and diastolic function in treated Nigerian hypertensives. Cardiovasc J Afr. 2010; 21(1):21-5.

14. Ajayi OE, Ajayi EA, Akintomide AO, *et al.* Ambulatory blood pressure profile and left ventricular geometry in Nigerian hypertensives. *J Cardiovas Dis Res.* 2011; 2(3):164-71.
15. Karaye KM. Relationship between Tei Index and left ventricular geometric patterns in a hypertensive population: a cross-sectional study. *Cardiovasc Ultrasound.* 2011; 28(9):21.
16. Akintunde AA, Akinwusi PO, Opadijo GO. Relationship between Tei index of myocardial performance and left ventricular geometry in Nigerians with systemic hypertension. *Cardiovasc J Afr.* 2011; 22(3):124-7.
17. Silangei LK, Maro VP, Diefenthal H, *et al.* Assessment of left ventricular geometrical patterns and function among hypertensive patients at a tertiary hospital, Northern Tanzania. *BMC Cardiovasc Disord.* 2012; 12:109.
18. Adebayo RA, Bamikole OJ, Balogun MO, Akintomide AO, Adeyeye VO, Bisiriyu LA, *et al.* Echocardiographic assessment of left ventricular geometric patterns in hypertensive patients in Nigeria. *Clin Med Insights Cardiol.* 2013; 7:161-7.
19. Oktay AA, Lavie CJ, Milani RV, Ventura HO, Gilliland YE, Shah S, Cash ME. Current Perspectives on Left Ventricular Geometry in Systemic Hypertension. *Prog Cardiovasc Dis.* 2016; 59(3):235-246.
20. Ferreira Filho PRP. Padrões de hipertrofia e geometria do ventrículo esquerdo pela ecocardiografia transtorácica. *Rev Bras Ecocardiog Imagem Cardiovasc.* 2012; 25(2):103-115.
21. Shigematsu Y, Hamada M, Ohtsuka T, *et al.* Left ventricular geometry as an independent predictor for extracardiac target organ damage in essential hypertension. *Am J Hypertens.* 1998; 11:1171-77.
22. Muiesan ML, Salvetti M, Monteduro C, Bonzi B, Paini A, Viola S, *et al.* Left ventricular concentric geometry during treatment adversely affects cardiovascular prognosis in hypertensive patients. *Hypertension.* 2004; 43(4):731-8.
23. Salvetti M, Paini A, Bertacchini F, Stassaldi D, Aggiusti C, Agabiti Rosei C, *et al.* Changes in left ventricular geometry during antihypertensive treatment. *Pharmacol Res.* 2018; 134:193-199.